

## Base Preparation

### I. GENERAL INFORMATION

The **GenieMat FF** line of products for impact sound insulation is engineered to provide better performance than any other sound control product available, and has been rigorously tested to achieve proven results. Made from up to 94% recycled rubber content and backed by over 100 independent laboratory and field tests, **GenieMat FF** has been selected and used in some of the best hotels and condominiums in the world.

### II. JOB SITE CONDITIONS

Areas to receive interior products or finish flooring over the **GenieMat FF** should be weather tight and maintained at minimum, a constant room temperature between 65°F - 95°F (18°C - 35°C) for 48 hours before, during, and after installation.

Areas to receive concrete over the **GenieMat FF** do not require weather tight conditions. Please contact **Pliteq** for **GenieMat FF** installation questions regarding specific conditions.

### III. SUBFLOOR REQUIREMENTS AND PREPARATION

**NOTE:** Please follow the subfloor requirements and preparation recommendations determined by the finished flooring manufacturer. Use the following subfloor requirements and preparation guidelines only when no such recommendations exist for the floor finishing product.

1. All subfloors/substrates must be inspected prior to installation.
2. Install **GenieMat FF** over wood, concrete, and approved self-levelling materials.
3. Concrete subfloors must be fully cured and permanently dry. Subfloor shall be dry, clean, smooth, level, and structurally sound. It should be free of dust, solvent, paint, wax, oil, grease, asphalt, sealers, curing and hardening compounds, alkaline salts, old adhesive residue, and other extraneous materials, according to ASTM F710.
4. Subfloor should be smooth to prevent irregularities, roughness, or other defects from affecting the material above it. The surface should be flat to the equivalent of 3/16" in 10', as described in ACI 117R, or as recommended by the floor manufacturer.
5. Mechanically remove all traces of old adhesives, paint, or other debris by scraping, sanding, or scarifying the substrate. DO NOT use solvents.
6. Grind high spots until level and fill low spots with an approved leveling compound.
7. All saw cuts (control joints), cracks, indentations, and other non-moving joints in the concrete must be filled with an approved patching/levelling compound. Allow patching material to dry thoroughly.
8. Any concrete subfloor can be a source of moisture-related flooring failures. It is the installer's responsibility to test the concrete or other cement-like material for moisture.

9. Maximum moisture vapor emission of the concrete must not exceed 5 lbs/1,000 ft<sup>2</sup> in a 24-hour period, as measured by the calcium chloride test method in accordance with the ASTM F1869 standard. If vapor emissions exceed acceptable limits,
10. Maximum relative humidity must not exceed 85% RH, as measured by the relative humidity test method in accordance with the ASTM F2170 standard.

#### IV. HAZARDS

##### A. SILICA WARNING

Concrete, floor patching compounds, toppings, and levelling compounds can contain free crystalline silica. Cutting, sawing, grinding, or drilling can produce respirable crystalline silica (particles 1-10 micrometers). Respirable silica is classified by OSHA as a 1A carcinogen and is known to cause respiratory diseases like silicosis. Avoid actions that cause dust to become airborne. Use local or general ventilation or protective equipment to reduce exposure below applicable exposure limits.

##### B. LEAD WARNING

Certain paints may contain lead. Exposure to excessive amounts of lead dust presents a health hazard. Refer to applicable federal, state, and local laws and the publication, *Lead Based Paint: Guidelines for Hazard Identification and Abatement in Public and Indian Housing*, available from the United States Department of Housing and Urban Development.

##### C. ASBESTOS WARNING

Resilient flooring, backing, lining felt, paint, or asphaltic "cutback" adhesives could contain asbestos fibers. Avoid actions that cause dust to become airborne. DO NOT sand, dry sweep, dry scrape, drill, saw, beadblast, mechanically chip, or pulverize. Regulations may require that the material be tested to determine asbestos content. Consult the documents titled, *Recommended Work Practices for Removal of Existing Resilient Floor Coverings*, available from the Resilient Floor Covering Institute.

---

### V. MATERIAL STORAGE AND HANDLING

1. Deliver the material to the job site in its original unopened packaging with all labels intact and stored appropriately to prevent damage.
2. Inspect all material for visual defects before beginning the installation. **Pliteq** will honor no labor claims on material.
3. Verify the material delivered is the correct type, thickness, and amount. Report any discrepancies immediately.
4. The material and any adhesive must be acclimated at room temperature for a minimum of 24 hours before starting the installation.
5. Roll material is stretched slightly when it is rolled at the factory. At the job site, the installer should allow all cuts to relax before gluing down. Shaking the material once it is unrolled can help it to relax more quickly.
6. In high ambient temperature climates such as deserts the materials can be stored outside but they should be adequately covered to stop any contact with direct sunlight and to also protect them from the ingress of sand and dirt.
7. The product should be checked periodically for moisture build up inside the roll shrink wrapping.

## Products

### I. GenieMat PMI

#### A. DESCRIPTION

Flat, resilient, single-ply white polyethylene foam perimeter isolation strip that is used to build a tub around the floor so that no hard floor covering surface touches any hard vertical surface (protrusion or wall).

#### B. APPLICATION

Attached at the base of the perimeter wall of the entire subfloor, as well as the perimeter of any protrusions, prior to unrolling and installing **GenieMat FF** products, in order to isolate or break the vibration transmission path between the floor and the wall.

### II. GenieMat FF

#### A. DESCRIPTION

Robust dimpled rubber pad made from 92% recycled rubber content used when superior sound control is required in mechanical rooms, sound studios, home theatres, entertainment venues, medical facilities, exercise, gym, and dance floors, and commercial, industrial, and multifamily housing.

# GENIE<sup>®</sup>MAT<sup>®</sup> FF

## TECHNICAL INSTALLATION MANUAL



### B. APPLICATION

Used directly under plywood, gypsum, light-weight, or full-weight concrete.

## Installation

### I. GenieMat PMI

#### A. GenieMat PMI INSTALLATION

1. Tape **GenieMat PMI** perimeter isolation strip to the base of the perimeter wall of the entire subfloor, as well as the perimeter of any protrusions



# GENIEMat<sup>®</sup> FF

## TECHNICAL INSTALLATION MANUAL

---



### II. GenieMat FF

#### A. GenieMat FF INSTALLATION

##### 1. Stage rolls of **GenieMat FF**



##### 2. Unroll and place **GenieMat FF** underlayment dimple-side down and membrane-side up.



# GENIEMAT<sup>®</sup> FF

## TECHNICAL INSTALLATION MANUAL



3. Trim ends of each section to fit floor surface area.
4. Allow all cuts to relax before taping the joints. Shaking the material once it is unrolled can help it to relax more quickly
5. Align lengthwise edges of underlayment with neighboring sheets by butting them up.





# GENIEMat<sup>®</sup> FF

## TECHNICAL INSTALLATION MANUAL



6. Use duct tape or high-quality carpet tape to secure butt joints and seams, and prevent underlayment from moving. If multiple layers of **GenieMat FF** are being used (i.e. **GenieMat FF50**) then only the seams on the top layer need to be taped.

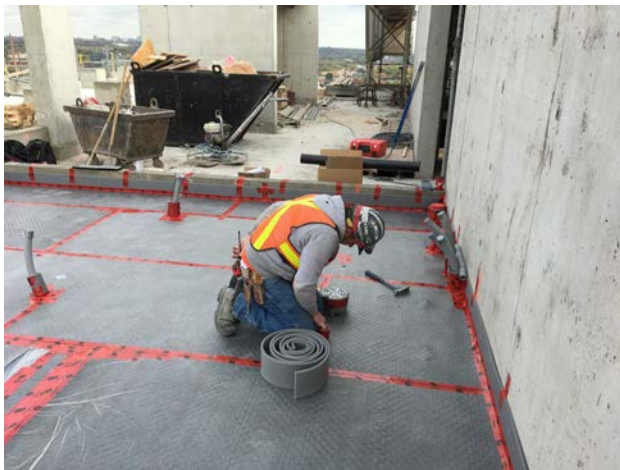


# GENIEMat® FF

## TECHNICAL INSTALLATION MANUAL

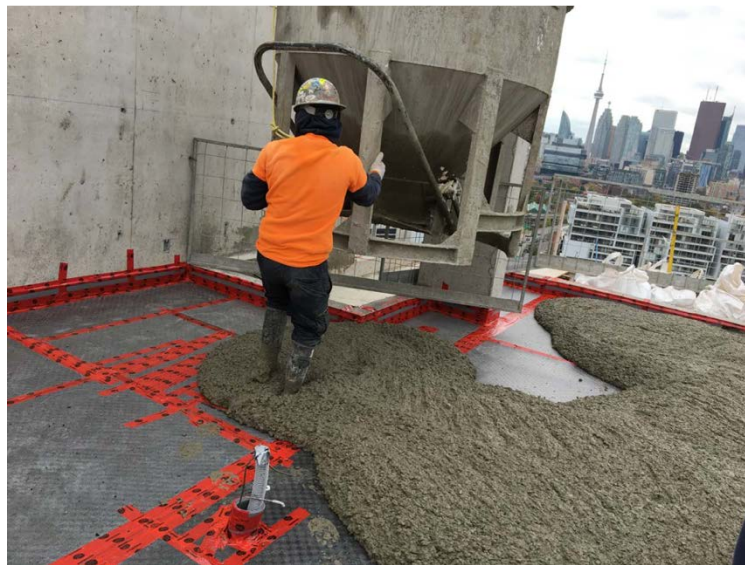


7. Use **GenieMat® PMI** to wrap all columns, drains, penetrations to ensure there is no hard surface contact with the topping material (plywood or concrete).



### B. CONCRETE INSTALLATION

1. Install concrete product to the thickness specified and according to the recommendations of the manufacturer. Minimum thickness of the concrete may vary with the thickness of the GenieMat FF underlayment. Install reinforcing (rebar or wire mesh) as required by structural engineering.



2. Properly heat and ventilate the building interior before, during, and after the installation of the concrete product to a constant room temperature of 50°F minimum and controlled humidity of 50% maximum.
3. Open windows daily a minimum of 2" to allow for the evaporation of moisture.



4. Before applying the sealer or installing the finished floor, be sure that the concrete is sufficiently cured by testing it using the plastic sheet method per ASTM D4263 or a method recommended by the manufacturer.

### C. PLYWOOD INSTALLATION

1. **GenieMat FF** can be installed under a floating plywood deck when a concrete topping is not an option
2. Minimum thickness of plywood shall be 2 layers of 3/8", cross lapped, glued and screwed together

### III. Finished Floor Installation

- A. Install all finished floors according to the manufacturer's recommendations. Do not nail, screw or create any mechanical connection through the underlayment between the subfloor and the finished floor.

## Recommended Products

**NOTE:** All materials shall be delivered to the job site in the original containers with the manufacturer's identification on each package. Unauthorized modification to any product is not permitted. The following materials are listed because of their extensive testing and field experience with **GenieMat** products. If you would like us to evaluate any materials as alternatives, call **Pliteq** Technical Services at (416) 449-0049.

### I. ACOUSTICAL SEALANT

- A. Tremco Acoustical Sealant
- B. Pecora AC-20® FTR

## Warranty Information

1. Project Warranty: Refer to Conditions of the Contract for project warranty provisions.

1.1: The recommendations for applications and installation are based on our extensive experience and on current technological practice. Our liability and responsibility in the event of damages is limited to the extent defined in our General Terms and Conditions of Business and is not in any way increased by the above recommendations or by advice given by our sales representatives or applications engineering staff.

1.2: **Pliteq** Inc. is a corporation duly organized and validly existing under the laws of the province of Ontario. **Pliteq** offers a limited lifetime warranty on the **GenieMat** brand of Sound Control Underlayment products against defects in material and workmanship and that **GenieMat** shall meet all published specifications and shall perform effectively. **Pliteq** warranties that during the warranty period **GenieMat** shall not harden, become brittle, chip, crack, tear, or exhibit any signs of excessive deterioration except for normal wear and tear. All other warranties including implied warranties for a purpose are expressly excluded. The sole remedy against the seller will be the replacement or repair of the defective goods, or at seller's option, credit may be issued not exceeding the selling price of the defective goods.

1.3: To qualify for replacement or repair, a claim is required to be made directly to **Pliteq**. All claims are required to be made by telephone at 416-449-0049 or a written claim can be sent to the following address:

Pliteq Inc.  
131 Royal Group Crescent  
Vaughan, ON  
L4H 1X9  
Canada

1.4: **Pliteq** must be notified within 14 days of the discovery of a defect and prior to installation. Any claims initiated outside of this limitation period are deemed invalid. A **Pliteq** claim form including customer requirements must be completed and submitted to **Pliteq** within 30 days of notification of defect. Once a claim process is initiated, a material inspection may be performed at **Pliteq's** discretion to ensure the situation is resolved in a comprehensively fair manner.

## General Terms and Conditions of Business

Our general terms and conditions of business, as may be amended from time to time, shall apply to all transactions between us and our customers. Any differing conditions or terms of buyer are herewith objected to and shall not apply. Any agreement affecting the execution of this contract must be in writing. We reserve the right to adapt prices, for confirmed orders as well, to reflect any increase in our costs, for any reason beyond our control, if this increase happens after confirmation of order but before delivery of goods. Our prices do not include taxes. Confirmed delivery dates are not fixed dates, unless stated otherwise. Samples and catalogues are to be considered non-binding material for illustration and/or test purposes, giving only an approximation of properties and specification. Unless agreed otherwise, our invoices are to be paid with payment terms of 30 days upon receipt of merchandise and invoice. Should a customer fail to comply within 30 days, he will automatically be in default of payment. Payment is considered made when it is at our disposal. Should there be reasons to doubt the solvency or credit standing of the client, we reserve the right to demand securities or prepayment for any outstanding delivery or declare immediate maturity of all outstanding claims. Our technical advice is given according to our best knowledge and experience and proven laboratory testing. We require 50% payment in advance for all GenieMat FIT and 100% payment in advance for all custom orders. All custom orders are noncancellable and cannot be modified after deposit is received. Shipping will be re quoted at the time of shipping, any estimated amount provided prior to that shall be for estimation purposes only. We reserve the right to issue a credit, not a refund, on products that are returned. We will not accept returns without prior authorization. We charge a 50% restocking fee for items not received on an Order Acknowledgement, or, for items returned to us. Any missed pickups from the factory/warehouse will be subject to a \$250USD fee added to the Order Acknowledgment. Same day rush orders will be based on availability (can be the following morning) and will be subject to a \$150USD fee added to the Order Acknowledgment. If a same day rush order is canceled the client will be responsible for the same day rush and restocking fees which will be added to the Order Acknowledgment. **Pliteq** will honor no labor claims on material. All adhesive purchases are final sale. Without agreed upon ship dates, storage fees of \$100 USD/pallet/month will be charged to the customer. Discounts for TL (truckload) orders are only applied to orders that require 30 days lead time on delivery and this is at the companies discretion (we may ship sooner if the product is available). For all warranty information please see specific product specification guides as found on our website.

## CONTACT US

For Your Project Specific Questions

**Australia** +61 455 203 269 | **Middle East** +971 4 813 5501 | **UK** +44 203 9846444

**E.** [info@pliteq.com.au](mailto:info@pliteq.com.au)

© PLITEQ AUSTRALIA PTY LTD. 2025.

06.21 <sup>®</sup> Trademarks of Pliteq Inc. The information provided is accurate to the best of our knowledge at the time of issue. However, we reserve the right to make changes when necessary without further notification. Suggested application may need to be modified to conform with local building codes and conditions. We cannot accept responsibility for products that are not used, or installed, to our specifications. All listed dimensions are nominal.



[www.pliteq.com.au](http://www.pliteq.com.au)