

Base Preparation

I. GENERAL INFORMATION

The **GenieMat FF** line of products for impact sound insulation is engineered to provide better performance than any other sound control product available, and has been rigorously tested to achieve proven results. Made from pre-engineered OSB (oriented strand board) subfloor panels complete with rubber or engineered elastomer isolators and mineral wool insulation. Rubber isolators are made from 94% recycled rubber content. **GenieMat FF** modular panels are backed by over 100 independent laboratory and field tests, **GenieMat FF** has been selected and used in some of the best hotels and condominiums in the world.

II. JOB SITE CONDITIONS

Areas to receive interior products or finish flooring over the **GenieMat FF** should be weather tight and maintained at minimum, a constant room temperature between 65°F - 95°F (18°C - 35°C) for 48 hours before, during, and after installation.

Please contact **Pliteq** for **GenieMat FF** installation questions regarding specific conditions.

III. SUBFLOOR REQUIREMENTS AND PREPARATION

NOTE: Please follow the subfloor requirements and preparation recommendations determined by the finished flooring manufacturer. Use the following subfloor requirements and preparation guidelines only when no such recommendations exist for the floor finishing product.

1. All subfloors/substrates must be inspected prior to installation.
2. Install **GenieMat FF** over plywood, concrete, and approved self-levelling materials.
3. Concrete subfloors must be fully cured and permanently dry. Subfloor shall be dry, clean, smooth, level, and structurally sound. It should be free of dust, solvent, paint, wax, oil, grease, asphalt, sealers, curing and hardening compounds, alkaline salts, old adhesive residue, and other extraneous materials, according to ASTM F710.
4. Subfloor should be smooth to prevent irregularities, roughness, or other defects from affecting the material above it. The surface should be flat to the equivalent of 3/16" in 10', as described in ACI 117R, or as recommended by the floor manufacturer.
5. Mechanically remove all traces of old adhesives, paint, or other debris by scraping, sanding, or scarifying the substrate. DO NOT use solvents.
6. Grind high spots until level and fill low spots with an approved leveling compound.
7. All saw cuts (control joints), cracks, indentations, and other non-moving joints in the concrete must be filled with an approved patching/levelling compound. Allow patching material to dry thoroughly.
8. Any concrete subfloor can be a source of moisture-related flooring failures. It is the installer's responsibility to test the concrete or other cement-like material for moisture.

For Your Project Specific Questions

Australia +61 61 455 203 269 | **Middle East** +971 4 813 5501 | **UK** +44 203 9846444

E. info@pliteq.com.au

© PLITEQ AUSTRALIA PTY LTD. 2025

04.25 [®]™ Trademarks of Pliteq Inc. The information provided is accurate to the best of our knowledge at the time of issue. However, we reserve the right to make changes when necessary without further notification. Suggested application may need to be modified to conform with local building codes and conditions. We cannot accept responsibility for products that are not used, or installed, to our specifications. All listed dimensions are nominal.

www.pliteq.com.au

9. Maximum moisture vapor emission of the concrete must not exceed 5 lbs/1,000 ft² in a 24-hour period, as measured by the calcium chloride test method in accordance with the ASTM F1869 standard. If vapor emissions exceed acceptable limits,
10. Maximum relative humidity must not exceed 85% RH, as measured by the relative humidity test method in accordance with the ASTM F2170 standard.

IV. HAZARDS

A. SILICA WARNING

Concrete, floor patching compounds, toppings, and levelling compounds can contain free crystalline silica. Cutting, sawing, grinding, or drilling can produce respirable crystalline silica (particles 1-10 micrometers). Respirable silica is classified by OSHA as a 1A carcinogen and is known to cause respiratory diseases like silicosis. Avoid actions that cause dust to become airborne. Use local or general ventilation or protective equipment to reduce exposure below applicable exposure limits.

B. LEAD WARNING

Certain paints may contain lead. Exposure to excessive amounts of lead dust presents a health hazard. Refer to applicable federal, state, and local laws and the publication, *Lead Based Paint: Guidelines for Hazard Identification and Abatement in Public and Indian Housing*, available from the United States Department of Housing and Urban Development.

C. ASBESTOS WARNING

Resilient flooring, backing, lining felt, paint, or asphaltic “cutback” adhesives could contain asbestos fibers. Avoid actions that cause dust to become airborne. DO NOT sand, dry sweep, dry scrape, drill, saw, beadblast, mechanically chip, or pulverize. Regulations may require that the material be tested to determine asbestos content. Consult the documents titled, *Recommended Work Practices for Removal of Existing Resilient Floor Coverings*, available from the Resilient Floor Covering Institute.

For Your Project Specific Questions

Australia +61 61 455 203 269 | **Middle East** +971 4 813 5501 | **UK** +44 203 9846444

E. info@pliteq.com.au

© PLITEQ AUSTRALIA PTY LTD. 2025

04.25 [®]™ Trademarks of Pliteq Inc. The information provided is accurate to the best of our knowledge at the time of issue. However, we reserve the right to make changes when necessary without further notification. Suggested application may need to be modified to conform with local building codes and conditions. We cannot accept responsibility for products that are not used, or installed, to our specifications. All listed dimensions are nominal.

www.pliteq.com.au

V. MATERIAL STORAGE AND HANDLING

1. Deliver the material to the job site in its original unopened packaging with all labels intact and stored appropriately to prevent damage.
2. Inspect all material for visual defects before beginning the installation. **Pliteq** will honor no labor claims on material.
3. Verify the material delivered is the correct type, thickness, and amount. Report any discrepancies immediately.
4. The material and any adhesive must be acclimated at room temperature for a minimum of 24 hours before starting the installation.
5. In high ambient temperature climates such as deserts the materials can be stored outside but they should be adequately covered to stop any contact with direct sunlight and to also protect them from the ingress of sand and dirt.

Product

I. GenieMat PMI

A. DESCRIPTION

Flat, resilient, single-ply white polyethylene foam perimeter isolation strip that is used to build a tub around the floor so that no hard floor covering surface touches any hard vertical surface (protrusion or wall).

B. APPLICATION

Attached at the base of the perimeter wall of the entire subfloor, as well as the perimeter of any protrusions, prior to installation of **GenieMat FF** products, in order to isolate or break the vibration transmission path between the floor and the wall.

II. GenieMat FF Modular Panels

A. DESCRIPTION

Pre-engineered OSB (oriented strand board) subfloor panels complete with rubber or engineered elastomer isolators and mineral wool insulation. Rubber isolators are made from 94% recycled rubber content. **GenieMat FF** modular panels are used when superior sound control is required in mechanical rooms, sound studios, home theatres, entertainment venues, medical facilities, fitness studios, gyms, or dance floors. **GenieMat FF** modular panels can be used in commercial, industrial, and multifamily housing.

B. APPLICATION

Used directly under plywood, gypsum, light-weight, or full-weight concrete.

For Your Project Specific Questions

Australia +61 61 455 203 269 | **Middle East** +971 4 813 5501 | **UK** +44 203 9846444

E. info@pliteq.com.au

© PLITEQ AUSTRALIA PTY LTD. 2025

0425 ®™ Trademarks of Pliteq Inc. The information provided is accurate to the best of our knowledge at the time of issue. However, we reserve the right to make changes when necessary without further notification. Suggested application may need to be modified to conform with local building codes and conditions. We cannot accept responsibility for products that are not used, or installed, to our specifications. All listed dimensions are nominal.

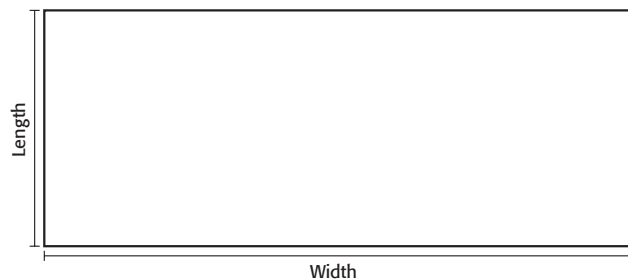
www.pliteq.com.au

Installation

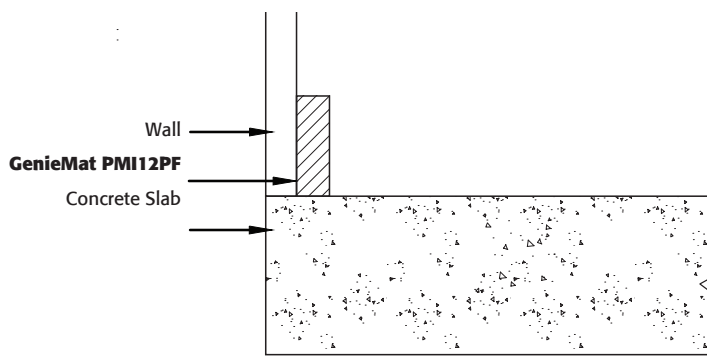
I. GenieMat FF Modular Panel with Concrete Topping

GenieMat FF70/FF70LDM is installed from one corner of the room diagonally to the opposite corner. Subfloor should be clean and prepped as specified by the finish flooring provider's specification. Steps 1-7 should be completed as each panel is installed (i.e. do not install the entire area before stapling the seams). As panels are being installed, place plywood on top to prevent damaging the panels.

- i. Determine overall dimensions of room (width and length). Determine start point of panels to avoid small cuts at perimeter.



- ii. Determine perimeter gap. Gap must be 0.5% of the room's length, split on either end of the room (i.e. if room is 50' by 70', the gap is $0.5\% \times 50' = 0.25'$ by $0.5\% \times 70' = 0.35'$ total or 1.5" by 2" on each wall).
- iii. Install perimeter isolation strip (**GenieMat PMI12PF**) around all columns and perimeter. Staple to wall or adhere with double sided tape. Note: **GenieMat PMI12PF** to extend above height of finished floor.

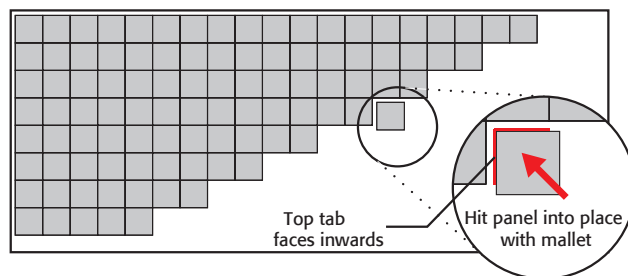


For Your Project Specific Questions

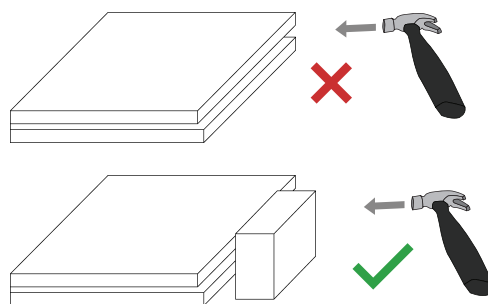
Australia +61 61 455 203 269 | **Middle East** +971 4 813 5501 | **UK** +44 203 9846444

E. info@pliteq.com.au

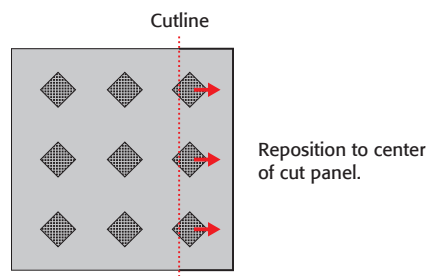
- iv. Install panels from one corner of the room diagonally to the opposite corner.



Do not directly hit the edge of the **GenieMat FF** panels with a mallet or hammer. Use a wood block flush with the edge to distribute the load and protect the edges as the panels are hit into place.



- v. a. Cut perimeter panels to size using table saw/circular saw.
b. If cut piece is small, isolator may need to be repositioned.



For Your Project Specific Questions

Australia +61 61 455 203 269 | **Middle East** +971 4 813 5501 | **UK** +44 203 9846444

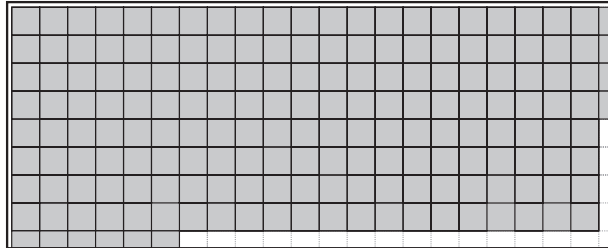
E. info@pliteq.com.au

GENIEMAT® FF MODULAR

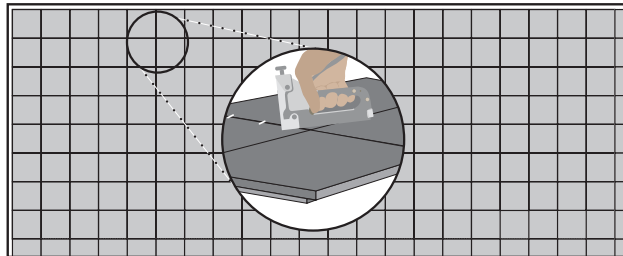
TECHNICAL INSTALLATION MANUAL



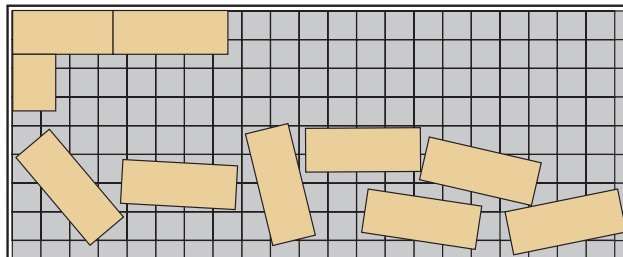
- vi.** Install cut panels around perimeter to complete grid.



- vii.** Staple shiplay in three places per seam.



- viii.** Avoid walking on installed and stapled **GenieMat FF70/FF70LDM** panels. Place plywood on top in high traffic areas to prevent damaging the panels.



For Your Project Specific Questions

Australia +61 61 455 203 269 | **Middle East** +971 4 813 5501 | **UK** +44 203 9846444

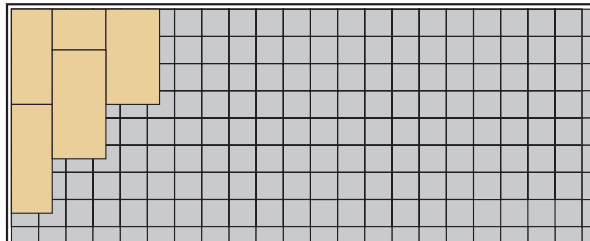
E. info@pliteq.com.au

GENIE[®]MAT[®] FF MODULAR

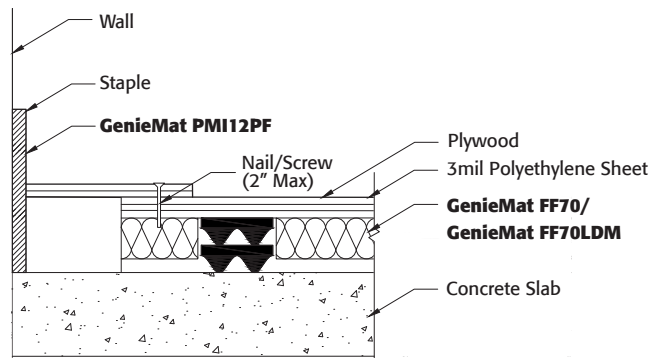
TECHNICAL INSTALLATION MANUAL



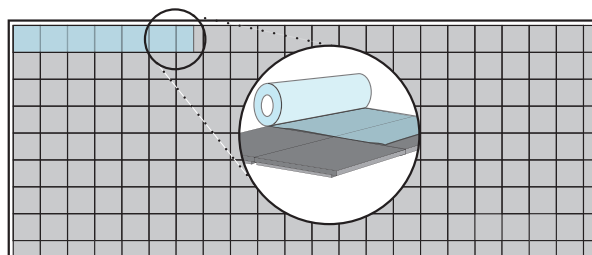
ix. For **GenieMat FF70LDM** installation only. Install the 1/4" plywood offsetting the seams from the panels. Screw the plywood every 12" on center (screw length should not exceed the thickness of the two layers being screwed together). For **GenieMat FF70** installation proceed to Step 10.



x. Nail or screw in a piece of plywood to bridge the perimeter gap. This will ensure no concrete seeps down into the gap. The 3 mil poly sheet is installed on top of this piece of plywood.



xi. Roll out 3 mil poly.



For Your Project Specific Questions

Australia +61 61 455 203 269 | **Middle East** +971 4 813 5501 | **UK** +44 203 9846444

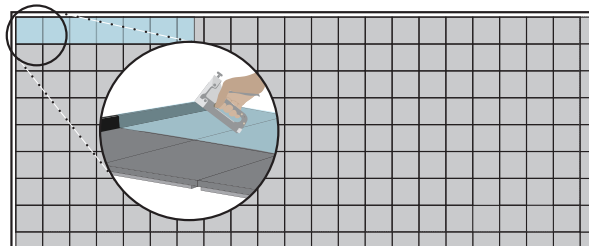
E. info@pliteq.com.au

GENIE[®]MAT[®] FF MODULAR

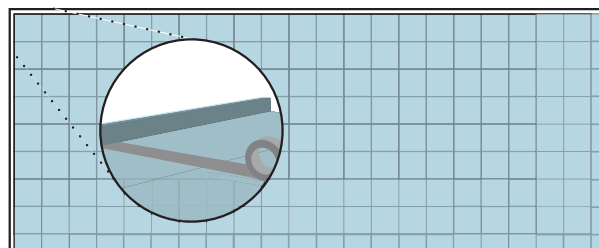
TECHNICAL INSTALLATION MANUAL



- xii.** Staple the 3 mil poly to the **GenieMat PMI12PF**. Staple it 3 to 4 inches up the wall in order to cover perimeter gap.



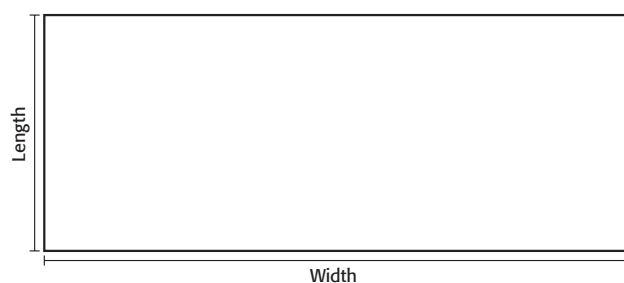
- xiii.** Duct tape 3 mil poly seams.



II. GenieMat FF Modular Panel with Plywood Topping

GenieMat FF70/FF70LDM is installed from one corner of the room diagonally to the opposite corner. Subfloor should be clean and prepped as specified by the finish flooring provider's specification. Steps 1-7 should be completed as each panel is installed (i.e. do not install the entire area before stapling the seams). As panels are being installed, place plywood on top to prevent damaging the panels.

- i.** Determine overall dimensions of room (width and length). Determine start point of panels to avoid small cuts at perimeter.



For Your Project Specific Questions

Australia +61 61 455 203 269 | **Middle East** +971 4 813 5501 | **UK** +44 203 9846444

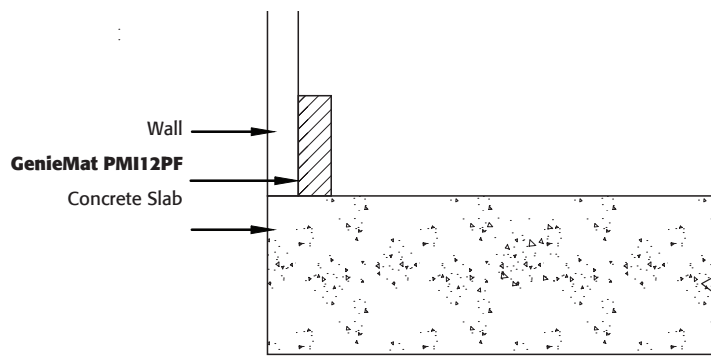
E. info@pliteq.com.au

GENIE[®]MAT[®] FF MODULAR

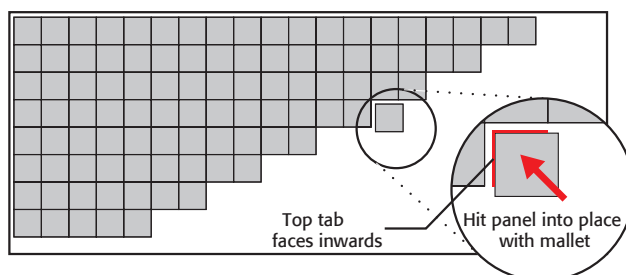
TECHNICAL INSTALLATION MANUAL



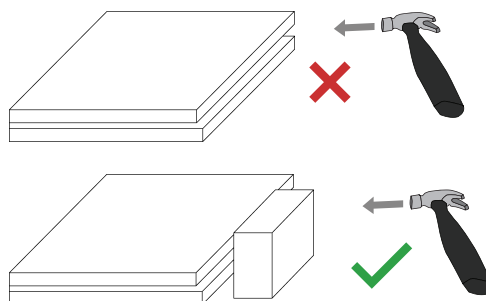
- ii. Determine perimeter gap. Gap must be 0.5% of the room's length, split on either end of the room (i.e. if room is 50' by 70', the gap is 0.5% x 50' by 0.5% x 70' = 3" by 4" total or 1.5" by 2" on each wall).
- iii. Install perimeter isolation strip (**GenieMat PMI12PF**) around all columns and perimeter. Staple to wall or adhere with double sided tape. Note: **GenieMat PMI12PF** to extend above height of finished floor.



- iv. Install panels from one corner of the room diagonally to the opposite corner.



Do not directly hit the edge of the **GenieMat FF** panels with a mallet or hammer. Use a wood block flush with the edge to distribute the load and protect the edges as the panels are hit into place.



For Your Project Specific Questions

Australia +61 61 455 203 269 | **Middle East** +971 4 813 5501 | **UK** +44 203 9846444

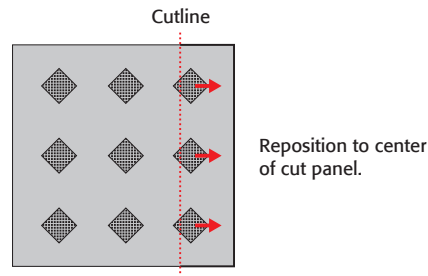
E. info@pliteq.com.au

GENIEMAT® FF MODULAR

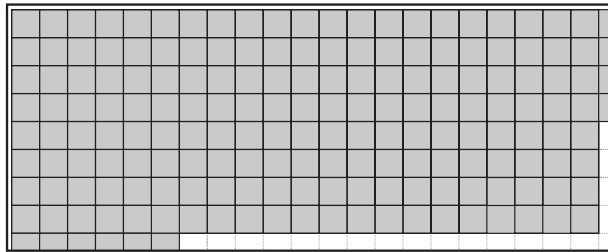
TECHNICAL INSTALLATION MANUAL



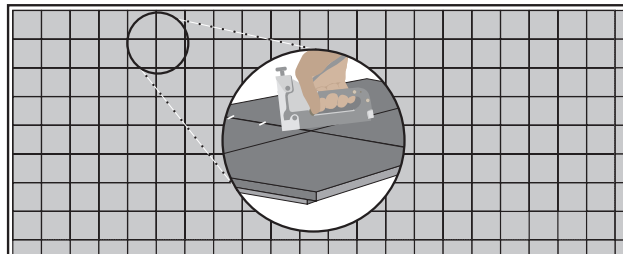
- v. a. Cut perimeter panels to size using table saw/circular saw.
b. If cut piece is small, isolator may need to be repositioned.



- vi. Install cut panels around perimeter to complete grid.



- vii. Staple shiplap in three places per seam.



For Your Project Specific Questions

Australia +61 61 455 203 269 | **Middle East** +971 4 813 5501 | **UK** +44 203 9846444

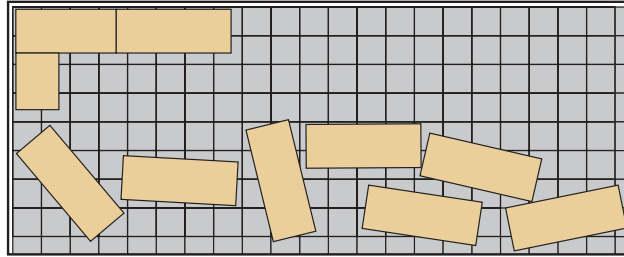
E. info@pliteq.com.au

GENIEMAT® FF MODULAR

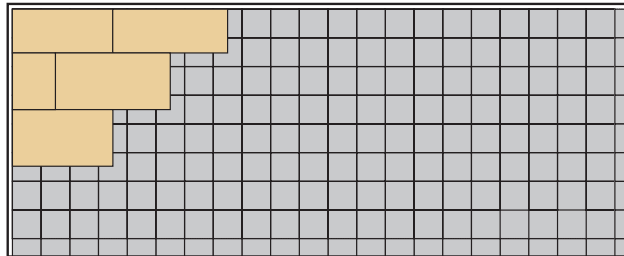
TECHNICAL INSTALLATION MANUAL



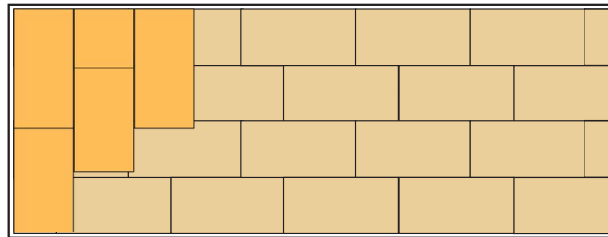
viii. Avoid walking on installed and stapled **GenieMat FF70/FF70LDM** panels. Place plywood on top in high traffic areas to prevent damaging the panels.



ix. Install the plywood offsetting the seams from the panels and adjacent layers of plywood. Screw the plywood every 12" on center (screw length should not exceed the thickness of the two layers being screwed together).



x. Repeat step 9 with second layer of plywood crosslaying in the opposite direction.



For Your Project Specific Questions

Australia +61 61 455 203 269 | **Middle East** +971 4 813 5501 | **UK** +44 203 9846444

E. info@pliteq.com.au

© PLITEQ AUSTRALIA PTY LTD. 2025

04.25 [®]™ Trademarks of Pliteq Inc. The information provided is accurate to the best of our knowledge at the time of issue. However, we reserve the right to make changes when necessary without further notification. Suggested application may need to be modified to conform with local building codes and conditions. We cannot accept responsibility for products that are not used, or installed, to our specifications. All listed dimensions are nominal.

www.pliteq.com.au

Warranty Information

1. Project Warranty: Refer to Conditions of the Contract for project warranty provisions.

1.1: The recommendations for applications and installation are based on our extensive experience and on current technological practice. Our liability and responsibility in the event of damages is limited to the extent defined in our General Terms and Conditions of Business and is not in any way increased by the above recommendations or by advice given by our sales representatives or applications engineering staff.

1.2: **Pliteq Inc.** is a corporation duly organized and validly existing under the laws of the province of Ontario. **Pliteq** offers a limited lifetime warranty on the **GenieMat** brand of Sound Control Underlayment products against defects in material and workmanship and that **GenieMat** shall meet all published specifications and shall perform effectively. **Pliteq** warrants that during the warranty period **GenieMat** shall not harden, become brittle, chip, crack, tear, or exhibit any signs of excessive deterioration except for normal wear and tear. All other warranties including implied warranties for a purpose are expressly excluded. The sole remedy against the seller will be the replacement or repair of the defective goods, or at seller's option, credit may be issued not exceeding the selling price of the defective goods.

1.3: To qualify for replacement or repair, a claim is required to be made directly to **Pliteq**. All claims are required to be made by telephone at 416-449-0049 or a written claim can be sent to the following address:

Pliteq Inc.
131 Royal Group Crescent
Vaughan, ON
L4H 1X9
Canada

1.4: **Pliteq** must be notified within 14 days of the discovery of a defect and prior to installation. Any claims initiated outside of this limitation period are deemed invalid. A **Pliteq** claim form including customer requirements must be completed and submitted to **Pliteq** within 30 days of notification of defect. Once a claim process is initiated, a material inspection may be performed at **Pliteq's** discretion to ensure the situation is resolved in a comprehensively fair manner.

For Your Project Specific Questions

Australia +61 61 455 203 269 | **Middle East** +971 4 813 5501 | **UK** +44 203 9846444

E. info@pliteq.com.au

© PLITEQ AUSTRALIA PTY LTD. 2025

®™ Trademarks of Pliteq Inc. The information provided is accurate to the best of our knowledge at the time of issue. However, we reserve the right to make changes when necessary without further notification. Suggested application may need to be modified to conform with local building codes and conditions. We cannot accept responsibility for products that are not used, or installed, to our specifications. All listed dimensions are nominal.

www.pliteq.com.au

General Terms and Conditions of Business

Our general terms and conditions of business, as may be amended from time to time, shall apply to all transactions between us and our customers. Any differing conditions or terms of buyer are herewith objected to and shall not apply. Any agreement affecting the execution of this contract must be in writing. We reserve the right to adapt prices, for confirmed orders as well, to reflect any increase in our costs, for any reason beyond our control, if this increase happens after confirmation of order but before delivery of goods. Our prices do not include taxes. Confirmed delivery dates are not fixed dates, unless stated otherwise. Samples and catalogues are to be considered non-binding material for illustration and/or test purposes, giving only an approximation of properties and specification. Unless agreed otherwise, our invoices are to be paid with payment terms of 30 days upon receipt of merchandise and invoice. Should a customer fail to comply within 30 days, he will automatically be in default of payment. Payment is considered made when it is at our disposal. Should there be reasons to doubt the solvency or credit standing of the client, we reserve the right to demand securities or prepayment for any outstanding delivery or declare immediate maturity of all outstanding claims. Our technical advice is given according to our best knowledge and experience and proven laboratory testing. We require 50% payment in advance for all GenieMat FIT and 100% payment in advance for all custom orders. All custom orders are noncancellable and cannot be modified after deposit is received. Shipping will be re quoted at the time of shipping, any estimated amount provided prior to that shall be for estimation purposes only. We reserve the right to issue a credit, not a refund, on products that are returned. We will not accept returns without prior authorization. We charge a 50% restocking fee for items not received on an Order Acknowledgement, or, for items returned to us. Any missed pickups from the factory/warehouse will be subject to a \$250USD fee added to the Order Acknowledgment. Same day rush orders will be based on availability (can be the following morning) and will be subject to a \$150USD fee added to the Order Acknowledgment. If a same day rush order is canceled the client will be responsible for the same day rush and restocking fees which will be added to the Order Acknowledgment. **Pliteq** will honor no labor claims on material. All adhesive purchases are final sale. Without agreed upon ship dates, storage fees of \$100 USD/pallet/month will be charged to the customer. Discounts for TL (truckload) orders are only applied to orders that require 30 days lead time on delivery and this is at the companies discretion (we may ship sooner if the product is available). For all warranty information please see specific product specification guides as found on our website.

For Your Project Specific Questions

Australia +61 61 455 203 269 | **Middle East** +971 4 813 5501 | **UK** +44 203 9846444

E. info@pliteq.com.au

© PLITEQ AUSTRALIA PTY LTD. 2025

04.25
®™ Trademarks of Pliteq Inc. The information provided is accurate to the best of our knowledge at the time of issue. However, we reserve the right to make changes when necessary without further notification. Suggested application may need to be modified to conform with local building codes and conditions. We cannot accept responsibility for products that are not used, or installed, to our specifications. All listed dimensions are nominal.

www.pliteq.com.au